

## **Lower Darby Creek Area Superfund Site**

City of Philadelphia/Darby Township, Philadelphia/Montgomery Counties, Pennsylvania

### **-- Residential Yard Cleanup to Restart in Eastwick Neighborhood --**

#### **What:**

The EPA will restart the cleanup of residential yards in the Eastwick Neighborhood. The yards to be addressed are impacted by polycyclic aromatic hydrocarbon (PAH) contamination, potentially related to the Clearview Landfill. This cleanup includes the excavation and removal of up to two feet of soil from residential yards. EPA began this cleanup in August 2016 and suspended the cleanup for the winter months. This phase of the cleanup will address an additional seven residential yards. Additional properties where PAH levels are lower will be addressed at a later date as part of the overall cleanup at the Clearview Landfill. More information about PAHs can be found in the attached fact sheet.

#### **Why:**

Results of soil samples taken during the spring and summer of 2016 show levels of PAHs in some residential properties. Although the levels do not pose an immediate health risk to the residents, they are above EPA's acceptable levels for PAHs in soil and need to be removed in order to reduce the potential for exposure, especially in areas where there may be bare soil.

#### **When:**

It is expected that cleanup work will begin in early May 2017. The work is expected to take about one month to complete, but individual properties should take no longer than two weeks.

#### **What You Will Notice:**

This phase of the cleanup will occur at several homes adjacent to the Eastwick City Park on the 8000 block of Mars Place and in a small section of the 8100 block of Buist Ave (see map on reverse page). Once the cleanup starts, EPA will use the same equipment used during the yard cleanup activities in 2016. This includes small excavators, a small loader (both no larger than a mid-size car) and small- to medium-sized dump trucks. The excavators and loaders will remove the contaminated soil from the yards. Small dump trucks will transport the contaminated soil to the temporary staging area on top of Clearview Landfill. These dump trucks will travel through the park as well as on a limited number of neighborhood streets. The larger dump trucks will bring in clean soil and new sod for the yards. EPA will minimize the amount of on-street traffic from construction vehicles.

#### **Brief Site Background:**

The Clearview Landfill is part of the larger Lower Darby Creek Area Superfund Site and operated from the 1950s-1970s. The Landfill accepted various types of wastes, which have contaminated soil and groundwater. EPA selected the cleanup plan for the landfill in 2014. Testing during the cleanup design identified the residential yard contamination being addressed now.

## For More Information:

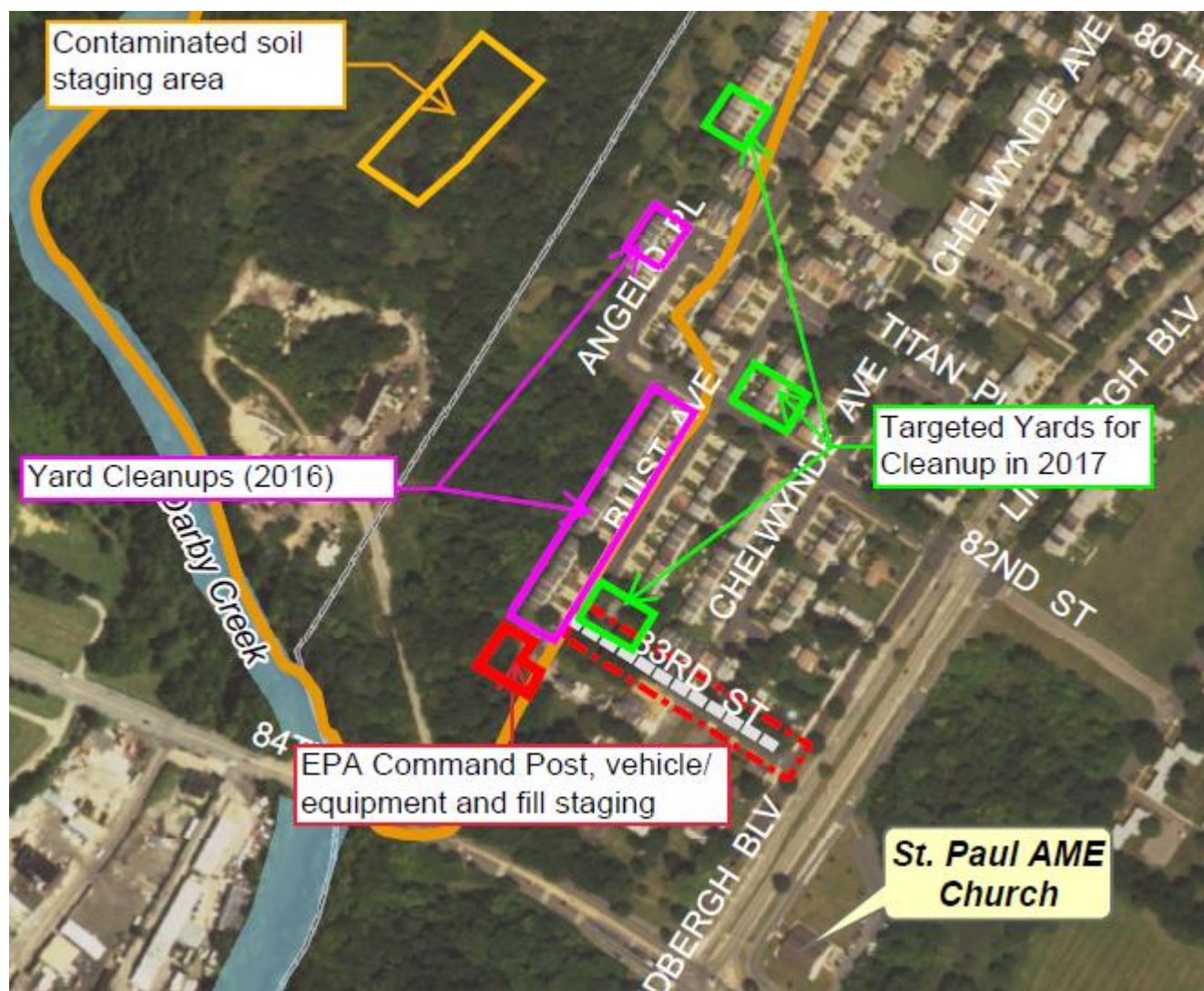
Please see the attached Removal Action fact sheet from August 2016 for more details.

Visit EPA's Lower Darby Creek Area Superfund Site webpage at:

<http://www.epa.gov/superfund/lowerdarby>

Call or E-mail Josh Barber, EPA Remedial Project Manager (215) 814-3393, [barber.joshua@epa.gov](mailto:barber.joshua@epa.gov)

Call or E-mail EPA Community Involvement Coordinators Larry Brown (215) 814-5527, [brown.larry@epa.gov](mailto:brown.larry@epa.gov)  
or Gina Soscia, (215) 814-5538, [soscia.gina@epa.gov](mailto:soscia.gina@epa.gov)



U.S. Environmental Protection Agency Region 3  
Attn: Gina Soscia  
1650 Arch Street (3HS52)  
Philadelphia, PA 19103